

CARHAULER & EQUIPMENT TRAILER GUIDE



CARHAULERS: (C4) (C5) (CE) (CC) (C8) (B5) (P8)
SUPER-WIDES: (B6) (B8) PRO-BEAM™: (H4) (H5) (H6) (H7)



THE PROFESSIONAL GRADE STANDARD



4" CHANNEL CARHAULER (C4)

Lengths: 14' - 20'



Length	Axles	Est. Base Weight†
14'	2 x 3,500 lbs	1,640 lbs / 744 kg
16'	2 x 3,500 lbs	1,720 lbs / 780 kg
18'	2 x 3,500 lbs	1,800 lbs / 816 kg

† Weights are estimated for base trailer.
PJ Trailers makes no guarantee regarding the accuracy of estimated weights.

STANDARD FEATURES

- 7,000 G.V.W.R.
- 7,000 G.A.W.R.
- 2" Ball Bulldog Coupler
- Safety Chains
- 1 - Bulldog Pipe Mount Swivel Jack (5,000 lb.)
- 2 Dexter E-Z Lube Axles, Idler & Brake (3,500 lb)
- 4 Leaf Double-Eye Spring Suspension
- 4 - NEW 15" White Spoke Wheels
- 4 - ST205/75R15 Radial Tires (1,820 lb)
- Stake Pockets
- 9" x 33" Treadplate Removable Alum Fenders
- 4" Channel Frame & Tongue
- 2 1/2" x 2 1/2" x 3/16" Angle Crossmembers
- 2" Treated Canadian Spruce Pine Fir Deck
- 83" Wide Deck
- Flushmount 6" Oval Lifetime LED Tail Lights
- All-Weather Wiring Harness (7-way RV)
- Sand Blasted, Acid Washed, Powder Coated
- 5 year Dexter Axle Warranty

AVAILABLE OPTIONS

* denotes a standard feature

COUPLER OPTIONS

- BP 2" A-Frame*
- BP 2 5/16" A-Frame
- BP 2" Adjustable
- BP 2 5/16" Adjustable
- BP 2" Atwood Style A-Frame Coupler
- BP 2 5/16" Atwood Style A-Frame Coupler
- 3" Pintle Eye - Channel-Mount

AXLE OPTIONS

3,500# (DEXTER)

- (2) One Electric (Spring)*
- (2) Electric (Spring)

TAIL OPTIONS

- Straight Deck w/ 5' Slide-in Ramps*
- 2' Dovetail w/ 5' Slide-in Ramps
- 2' Dovetail w/ 2 Fold-up Ramps

OTHER OPTIONS

- Blackwood Pro Full Deck
- Blackwood Pro Outer Deck
- 1 Extra Pair Flushmount D-Rings on Steel Floor
- 1 Pair D-Rings
- Plate for Winch

- Upgrade to 7k Jack
- Steel Diamond Plate Fenders
- LED Light Upgrade Clearance/Marker Rubrail
- Mount Only for Spare Tire
- Rear Trailer Support Jacks
- Spare Tire and Mount
- 16" oc Crossmembers



REMOVABLE DIAMOND PLATE STEEL FENDERS

Our removable fenders are made with 11-gauge steel diamond plate for durability and can easily be removed for extra clearance for loading or maintenance.



PREMIUM COMPONENTS

Our 4" Channel Carhauler is equipped with a 5K Bulldog™ Pipe Mount Swivel Jack, Bulldog™ Coupler, Dexter Axles, All-Weather Wiring Harness and ST205/75R15 Radial Tires at no additional cost.

5" CHANNEL CARHAULER (C5)



Lengths: 16' - 22'



Length	Axles	Est. Base Weight†
16'	2 x 3,500 lbs	1,850 lbs / 839 kg
18'	2 x 3,500 lbs	1,970 lbs / 894 kg
20'	2 x 3,500 lbs	2,080 lbs / 943 kg

† Weights are estimated for base trailer.
PJ Trailers makes no guarantee regarding the accuracy of estimated weights.

STANDARD FEATURES

- 7,000 lb. G.V.W.R.
- 3,500 lb. x 2 G.A.W.R.
- 2" Ball Bulldog Coupler
- Safety Chains
- 1 - Bulldog Pipe Mount Swivel Jack (5,000 lb.)
- 2- Dexter E-Z lube Axles, Idler & Brake (3,500 lb)
- 4 Leaf Double-eye Spring Suspension
- 4 - NEW 15" White Spoke Wheels
- 4 - ST205/75R15 Radial Tires (1,820 lb)
- Stake Pockets
- Electric Breakaway Kit w/ Charger
- 9" x 33" Treadplate Removable Alum Fenders
- 5' Channel Ramps w/ Holder
- 5" Channel Frame & Tongue
- 3" Channel Crossmembers 24" on Center
- 2" Treated Pine Lumber Deck
- 83" Wide Deck (Except with Drop Axles)
- DOT Approved Flushmount Lifetime LED Lights
- All-Weather Wiring Harness (7-way RV)
- Sand Blasted, Acid Washed, Powder Coated
- GN Option Equipped with 2 Jacks
- GN Equipped w/Lockable Front Toolbox
- 5 year Dexter Axle Warranty

AVAILABLE OPTIONS

* denotes a standard feature

COUPLER OPTIONS

- BP 2" A-Frame*
- BP 2 5/16" A-Frame
- BP 2 5/16" Adjustable (14,000 lb.)
- 3" Pintle Eye - Channel-mount (14,000 lb.)

AXLE OPTIONS

3,500# (DEXTER)

- (2) One Electric (Spring)*
- (2) Electric (Spring)

TAIL OPTIONS

- Straight Deck w/ Rear Slide-in Ramps
- Straight Deck w/ 5' Slide-in Ramps*
- 4' Dovetail w/ 5' Slide-in Ramps
- 4' Dovetail w/ 5' Rear Slide-in Ramps
- 2' Dovetail w/ 5' Slide-in Ramps
- 2' Dovetail w/ 5' Rear Slide-in Ramps
- 2' Dovetail w/ 2 Fold-up Ramps

OTHER OPTIONS

- Blackwood Pro Full Deck
- Blackwood Pro Outer Deck
- 1 Extra Pair Flushmount D-Rings on Steel Floor
- 1 Pair D-Rings

- Front Toolbox (with 7k Jack)
- Upgrade to 225/75 R15 on 3.5k Axles
- 10k Jack (Bumper Pull)
- Plate for Winch
- Upgrade to 7k Jack
- 2 Stake Pockets In Front of Trailer
- 4ft Expanded Metal Sides (Removable)
- Side Mount ATV Ramps (12ft or Longer)
- 12"oc Crossmembers
- Rough Oak Floor (Paris and Ohio Only)
- Steel Diamond Plate Fenders
- Expanded Metal Chain Tray
- Diamond Plate Running Boards (Paris ONLY)
- 2" Pipetop Siderails (Removable)
- Rubrail
- 11ga(1/8") DP Steel Floor w/ 4 Flushmount D-Rings & 16"oc
- Mount Only for Spare Tire
- Rear Trailer Support Jacks
- Spare Tire and Mount
- 16"oc Crossmembers
- 22" Solid Metal Sides w/ 2" pipe-top (Removable)



REMOVABLE DIAMOND PLATE STEEL FENDERS

Our removable fenders are made with 11-gauge steel diamond plate for durability and can easily be removed for extra clearance for loading or maintenance.



PREMIUM COMPONENTS

Our 5" Channel Carhauler is equipped with a 5K Bulldog™ Pipe Mount Swivel Jack, Bulldog™ Coupler, Dexter Axles, All-Weather Wiring Harness and ST205/75R15 Radial Tires at no additional cost.



5" CHANNEL CARHAULER (CE)

Lengths: 16' - 22'



CHANNEL FRAME

Length	Axles	Est. Base Weight†
16'	2 x 5,200 lbs	2,200 lbs / 998 kg
18'	2 x 5,200 lbs	2,360 lbs / 1,070 kg
20'	2 x 5,200 lbs	2,500 lbs / 1,134 kg
22'	2 x 5,200 lbs	2,750 lbs / 1,247 kg

† Weights are estimated for base trailer.
PJ Trailers makes no guarantee regarding the accuracy of estimated weights.

STANDARD FEATURES

- 9,990 lb. G.V.W.R.
- 5,200 lb. x 2 G.A.W.R.
- BP 2 5/16" Adjustable (14,000 lb.)
- Safety Chains
- 1 - Drop Leg Jack (8,000 lb.)
- 2 - Dexter E-Z Lube Brake Axle (5,200 lb.)
- 6 Leaf Slipper Spring Suspension
- 4 - 15" White Spoke Wheels
- 4 - 225/75R15 Radial Tires
- Stake Pockets
- Electric Breakaway Kit w/ Charger
- 9" x 72" Treadplate Removable Steel Fenders
- 5' Channel Ramps w/ Holder
- Dual Bulldog Rear Support Jacks
- 5" Channel Frame & Tongue
- 3" Channel Crossmembers 16" on Center
- 2" Treated Pine Lumber Deck
- 83" Wide Deck (Except with Drop or Torsion Axles)
- DOT Approved Flushmount Lifetime LED Lights
- All-Weather Wiring Harness (7-way RV)
- Sand Blasted, Acid Washed, Powder Coated
- 5 year Dexter Axle Warranty

AVAILABLE OPTIONS

* denotes a standard feature

COUPLER OPTIONS

- BP 2 5/16" A-Frame
- BP 2 5/16" Adjustable (14,000 lb.)*
- 3" Pintle Eye - Channel-mount (20,000 lb.)
- BP 2 5/16" Adj. (14,000 lb.) w/8 Hole Chan Bracket
- 3" Pintle Eye Chan Mnt (20k lb.) w/8 Hole Ch Brckt
- BP 2 5/16" Adj. Cplr w/8 Hole Chn Brckt (20k)

AXLE OPTIONS

5,200# (DEXTER)

- (2) Electric (Spring)*

TAIL OPTIONS

- Straight Deck w/ Rear Slide-in Ramps
- Straight deck w/ 5' Slide-in Ramps*
- Straight Deck w/ 2 Fold-up Ramps
- 2' Dovetail w/ 2 Fold-up Ramps
- 2' Dovetail w/ 4' Heavy Duty Fold-up Gate
- 2' Dovetail w/ Split Heavy Duty Gate
- 2' Dovetail w/ 5' Slide-in Ramps
- 2' Dovetail w/ 5' Rear Slide-in Ramps
- 4' Dovetail w/ 5' Rear Slide-in Ramps

OTHER OPTIONS

- Blackwood Pro Full Deck
- Blackwood Pro Outer Deck
- 1 Extra Pair Flushmount D-Rings on Steel Floor
- 1 Pair D-Rings

- Weld on Fenders
- Front Toolbox
- 10k Jack (Bumper Pull)
- Plate for Winch
- Upgrade to 235/80 R16 on 52k Axles
- 2 Stake Pockets In Front of Trailer
- 12" oc Crossmembers
- Rough Oak Floor (Texas and Ohio Only)
- Receiver Hitch
- Expanded Metal Chain Tray
- Diamond Plate Running Boards (Texas Only)
- 2" Pipetop Siderails (Removable)
- Rubrail
- 11ga(1/8") DP Steel Floor w/ 4 Flushmount D-Rings
- Mount Only for Spare Tire
- Spare Tire and Mount
- 22" Solid Metal Sides w/ 2" pipe-top (Removable)



PREMIUM COMPONENTS

Our 5" Channel Equipment is equipped with a BK Pro Series Top Wind Drop-leg Jack, Demco eZ-Latch coupler, Dexter EZ-Lube Drop Axles, All-Weather Wiring Harness and Provider Radial Tires at no additional cost.



LOADING IS SAFE, QUICK & EASY

A popular tail option on our 5" Channel Car Hauler is the 2' Dovetail w/ 5' Slide-in Ramps and Rear Support Jacks. This combination makes loading a vehicle safe, quick and easy.

6" CHANNEL EQUIPMENT (CC)



Lengths: 14' - 24'



Length	Axles	Est. Base Weight†
16'	2 x 7,000 lbs	2,800 lbs / 1,270 kg
18'	2 x 7,000 lbs	2,950 lbs / 1,338 kg
20'	2 x 7,000 lbs	3,100 lbs / 1,406 kg
22'	2 x 7,000 lbs	3,250 lbs / 1,474 kg
24'	2 x 7,000 lbs	3,400 lbs / 1,542 kg

† Weights are estimated for base trailer.
PJ Trailers makes no guarantee regarding the accuracy of estimated weights.

STANDARD FEATURES

- 14,000 lb. G.V.W.R.
- 7,000 lb. x 2 G.A.W.R.
- Adjustable 2 5/16" Ball Bulldog Coupler
- Safety Chains
- 1 - Drop Leg Jack (10,000 lb.)
- 2 - Dexter E- Z Lube Brake Axles (7,000 lb.)
- 6 Leaf Slipper Spring Suspension
- 4 - 16" White Spoke Wheels
- 4 - 235/80R16 Radial Tires (3,520 lb)
- Stake Pockets
- Electric Breakaway Kit w/ Charger
- 9" x 72" Treadplate Removable Steel Fenders
- 5' Channel Ramps w/ Holder
- Dual Bulldog Rear Support Jacks
- 6" Channel Frame & Tongue
- 3" Channel Crossmembers 16" on Center
- 2" Treated Pine Lumber Deck
- 83" Wide Deck
- DOT Approved Flushmount Lifetime LED Lights
- All-Weather Wiring Harness (7-way RV)
- Sand Blasted, Acid Washed, Powder Coated
- Tool Tray In Tongue
- GN Option Equipped with 2 Jacks
- GN Equipped w/Lockable Front Toolbox
- 5 year Dexter Axle Warranty

AVAILABLE OPTIONS

* denotes a standard feature

COUPLER OPTIONS

- BP 2 5/8" Adjustable (14,000 lb.)
- 3" Pintle Eye - Channel-mount (20,000 lb.)
- GN 2 5/8" Round (25,000 lb.) w/ Toolbox
- GN 2 5/8" Square (25,000 lb.) w/ Toolbox
- BP 2 5/8" Adj. Cplr w/HD 6 hole Chn Brkt (20k)

AXLE OPTIONS

7,000# (DEXTER)

- (2) Electric (Drop Axle)
- (2) Electric (Spring)*
- (2) Electric (Torsion)
- (2) Elec/Hyd Disc (1,600 PSI Pump) (Spring)
- (2) Elec/Hyd Disc (1,600 PSI Pump) (Torsion)
- (2) Surge Hydraulic Drum [Surge Coupler] (Spring)
- (3) Electric (Spring)
- (3) Electric (Torsion)
- (3) Elec/Hyd Disc (1,600 PSI Pump) (Spring)

8,000# OIL BATH W/14 PLY LR-G TIRES (DEXTER)

- (2) Electric (Spring)
- (2) Electric (Torsion)
- (3) Electric (Spring)

7,000# W/14 PLY LR-G TIRES (DEXTER)

- (2) Electric (Spring)
- (2) Electric (Torsion)
- (2) Elec/Hyd Disc (1,600 PSI Pump) (Spring)
- (3) Electric (Spring)

- (3) Electric (Torsion)
- (3) Elec/Hyd Disc (1,600 PSI Pump) (Spring)
- 8,000# OIL BATH AXLES, 235/80 LR-E TIRES (DEXTER)**
- (2) Electric (Spring)
- (2) Elec/Hyd Disc (1,600 PSI Pump) (Spring)
- 8,000# OIL BATH W/215/75R17.5 LR-H SINGLES(DEXTER)**
- (2) Electric (Torsion)

TAIL OPTIONS

- Straight Deck w/ Rear Slide-in Ramps
- Straight deck w/ 5' Slide-in Ramps*
- Straight deck w/ 5' Fold-up Ramps
- 2' Dovetail w/ 5' Slide-in Ramps
- 2' Dovetail w/ Split Heavy Duty Gate
- 3.5' Dovetail w/2 Monster Ramps
- 4' Dovetail w/ 5' Fold-up Ramps

OTHER OPTIONS

- Add BlackWood Pro to Dovetail
- Blackwood Pro Full Deck
- Blackwood Pro Outer Deck
- 1 Extra Pair Flushmount D-Rings on Steel Floor
- 1 Pair D-Rings
- Fork Rack
- 2 Hydraulic Monster Jacks™
- 1 Pair Weld-On Strap Ratchets
- Top Riser Toolbox
- 2nd Jack (Bumper Pull)

- Plate for Winch
- 6" Taller GN Riser
- Rubrail
- 12"oc Crossmembers
- Rough Oak Floor
- Receiver Hitch
- 2 5/8" Pipetop on Siderails (Removable)
- Diamond Plate Running Boards
- 11ga(1/8") DP Steel Floor w/4 Flushmount D-Rings & 12"oc Front Toolbox (Bumper Pull)
- Spare Tire and Mount (Bumper Pull)
- Rear Trailer Support Jacks
- Bulldog 2-speed Jacks (12,000 lb.)
- 3" X 3" Square Tubing Top Rail (Removable)



8" CHANNEL EQUIPMENT (C8)

Lengths: 18' - 40'



CHANNEL FRAME

Length	Axles	Est. Base Weight†
20'	2 x 7,000 lbs	3,340 lbs / 1,515 kg
22'	2 x 7,000 lbs	3,530 lbs / 1,601 kg
26'	2 x 7,000 lbs	3,910 lbs / 1,774 kg
30'	2 x 7,000 lbs	4,300 lbs / 1,950 kg
34'	2 x 7,000 lbs	4,680 lbs / 2,123 kg

† Weights are estimated for base trailer.
PJ Trailers makes no guarantee regarding the accuracy of estimated weights.

STANDARD FEATURES

- 14,000 lb. G.V.W.R.
- 7,000 lb. x 2 G.A.W.R.
- Adjustable 2 5/16" Ball Bulldog Coupler
- Safety Chains
- 1 - Drop Leg Jack (10,000 lb.)
- 2 - Dexter E-Z Lube Brake Axles (7,000 lb.)
- 6 Leaf Slipper Spring Suspension
- 4 - 16" White Spoke Wheels
- 4 - 235/80R16 Radial Tires (3,520 lb)
- Stake Pockets
- Electric Breakaway Kit w/ Charger
- 9" x 72" Treadplate Removable Steel Fenders
- 5' Channel Ramps w/ Holder
- Dual Bulldog Rear Support Jacks
- 8" Channel Frame & Tongue
- 3" Channel Crossmembers 16" on Center
- 2" Treated Pine Lumber Deck
- 83" Wide Deck
- DOT Approved Flushmount Lifetime LED Lights
- All-Weather Wiring Harness (7-way RV)
- Sand Blasted, Acid Washed, Powder Coated
- Tool Tray In Tongue
- GN Option Equipped with 2 Jacks
- GN Equipped w/Lockable Front Toolbox
- 5 year Dexter Axle Warranty

AVAILABLE OPTIONS

* denotes a standard feature

COUPLER OPTIONS

- BP 2 5/8" Adjustable (14,000 lb.)
- BP 2 5/8" Adjustable Rigid Mount (25,000 lb.)
- 3" Pintle Eye - Channel-mount (20,000 lb.)
- GN 2 5/8" Round (25,000 lb.) w/ Toolbox
- GN 2 5/8" Square (25,000 lb.) w/ Toolbox

AXLE OPTIONS

7,000# (DEXTER)

- (2) Electric (Spring)*
- (2) Electric (Torsion)
- (3) Electric (Drop Axle)
- (3) Electric (Spring)

8,000# OIL BATH W/14 PLY LR-G TIRES (DEXTER)

- (2) Electric (Spring)
- (2) Elec/Hyd Disc (1,600 PSI Pump) (Spring)

7,000# W/14 PLY LR-G TIRES (DEXTER)

- (2) Electric (Spring)
- (3) Electric (Spring)

8,000# OIL BATH AXLES, 235/80 LR-E TIRES (DEXTER)

- (2) Electric (Spring)

TAIL OPTIONS

- Straight deck w/ 5' Slide-in Ramps*
- Straight deck w/ 5' Fold-up Ramps
- 2' Dovetail w/31x66 HD Fold-up Ramps

- 2' Dovetail w/ 5' Slide-in Ramps
- 2' Dovetail w/ 5' Fold-up Ramps
- 2' Dovetail w/ 5' Dbl Hinge Fold-up Ramps
- 2' Dovetail w/ 5' with Rear Slide-in Ramps
- 3.5' Dovetail w/2 Monster Ramps
- 4' Dovetail w/ 5' Slide-in Ramps
- 4' Dovetail w/ 5' Fold-up Ramps

OTHER OPTIONS

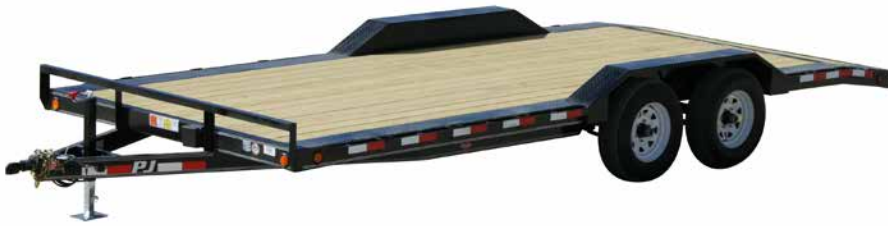
- Blackwood Pro Full Deck
- Blackwood Pro Outer Deck
- 1 Extra Pair Flushmount D-Rings on Steel Floor
- 1 Pair D-Rings
- 2 Hydraulic Monster Jacks™
- Spare Tire and Mount (BP) 215/75/R17.5
- Top Riser Toolbox
- 2nd Jack (Bumper Pull)
- Plate for Winch
- 6" Taller GN Riser
- 9,990 G.V.W.R.
- Rubrail
- 12"oc Crossmembers
- Rough Oak Floor
- Receiver Hitch
- 2 3/8" Pipetop on Siderails (Removable)
- Diamond Plate Running Boards

- 11ga(1/8") DP Steel Floor w/4 Flushmount D-Rings & 12"oc
- Front Toolbox (Bumper Pull)
- Mount Only for Spare Tire
- Spare Tire and Mount (Bumper Pull)
- Rear Trailer Support Jacks
- Bulldog 2-speed Jacks (12,000 lb.)
- 3" X 3" Square Tubing Top Rail (Removable)

5" CHANNEL BUGGY HAULER (B5)



Lengths: 16' - 22'



Length	Axles	Est. Base Weight†
18'	2 x 3,500 lbs	2,360 lbs / 1,070 kg
20'	2 x 3,500 lbs	2,500 lbs / 1,134 kg

† Weights are estimated for base trailer.
PJ Trailers makes no guarantee regarding the accuracy of estimated weights.

STANDARD FEATURES

- 7,000 lb. G.V.W.R.
- 3,500 lb. x 2 G.A.W.R.
- 2" Ball Bulldog Coupler
- Safety Chains
- 1 - Top Wind Drop-Leg Jack (8,000 lb.)
- 2 Dexter E-Z Lube Axles, Idler & Brake (3,500 lb)
- 4 Leaf Double-eye Spring Suspension
- 4 - NEW 15" White Spoke Wheels
- 4 - ST205/75R15 Radial Tires (1,820 lb)
- Electric Breakaway Kit w/ Charger
- Rubrail & Stake Pockets
- 9" High Drive Over DP Steel Fenders
- 5' Channel Ramps w/ Holder
- 5" Channel Frame & Tongue
- 3" Channel Crossmembers 24" on Center
- 2" Treated Pine Lumber Deck
- 102" Wide Deck
- DOT Approved Flushmount LED Lights
- All-Weather Wiring Harness (7-way RV)
- Sand Blasted, Acid Washed, Powder Coated
- 82 1/2" Between the Fenders
- 5 year Dexter Axle Warranty

AVAILABLE OPTIONS

* denotes a standard feature

COUPLER OPTIONS

- BP 2" A-Frame*
- BP 2 5/16" A-Frame
- BP 2 5/16" Adjustable
- 3" Pintle Eye - Channel-mount (14,000 lb.)

AXLE OPTIONS

3,500# (DEXTER)

- (2) One Electric (Spring)*
- (2) Electric (Spring)
- (2) Surge Hydraulic Drum [Surge Coupler] (Spring)

5,200# (DEXTER)

- (2) One Electric (Spring)
- (2) Electric (Spring)
- (2) Surge Hydraulic Drum [Surge Coupler] (Spring)

TAIL OPTIONS

- Straight Deck w/ 5' Slide-in Ramps*
- Straight Deck w/ Rear Slide-in Ramps
- 2' Dovetail w/ 5' Slide-in Ramps
- 2' Dovetail w/ 5' Rear Slide-in Ramps
- 2' Dovetail w/ 4' Heavy Duty Fold-up Gate
- 2' Dovetail w/ 2 Fold-up Ramps

OTHER OPTIONS

- Blackwood Pro Full Deck
- Blackwood Pro Outer Deck

- 1 Extra Pair Flushmount D-Rings on Steel Floor
- 1 Pair D-Rings
- Rate at 9900 GVWR
- 10k Jack (Bumper Pull)
- Plate for Winch
- 12" oc Crossmembers
- 11ga(3/4) DP Steel Floor w/4 Flushmount D-Rings & 16"oc
- Mount Only for Spare Tire
- Rear Trailer Support Jacks
- Spare Tire and Mount
- 16"oc Crossmembers



DRIVE-OVER FENDERS

Our stout diamond plate steel drive over fenders allow you to drive wide vehicles over the fenders to take full advantage of the deck width.



102" DECK WIDTH

The 102" rail to rail deck width of the Buggy Hauler makes it an excellent choice for hauling 4x4s, rock crawlers, trucks, and other vehicles that exceed the typical 83" deck width.



6" CHANNEL SUPER-WIDE (B6)

Lengths: 18' - 24'



Length	Axles	Est. Base Weight†
22'	2 x 7,000 lbs	3,750 lbs / 1,701 kg

† Weights are estimated for base trailer.
PJ Trailers makes no guarantee regarding the accuracy of estimated weights.

STANDARD FEATURES

- 14,000 lb. G.V.W.R.
- 7,000 lb. x 2 G.A.W.R.
- Adjustable 2 5/16" Ball Bulldog Coupler
- Safety Chains
- 1 - Drop Leg Jack (10,000 lb.)
- 2 - Dexter E-Z Lube Brake Axles (7,000 lb.)
- 6 Leaf Slipper Spring Suspension
- 4 - 16" White Spoke Wheels
- 4 - 235/80R16 Radial Tires (3,520 lb)
- Electric Breakaway Kit w/ Charger
- 5' Channel Ramps w/ Holder
- Dual Bulldog Rear Support Jacks
- 6" Channel Frame & Tongue
- 3" Channel Crossmembers 16" on Center
- 2" Treated Pine Lumber Deck
- 102 Wide Deck
- All-Weather Wiring Harness (7-way RV)
- Sand Blasted, Acid Washed, Powder Coated
- Fender Rating: 4,000 lbs/ea
- Rubrail w/Stake Pockets
- Tool Tray In Tongue
- DOT Approved Flushmount Lifetime LED Lights
- GN Option Equipped with 2 Jacks
- 82 1/2" Between the Fenders
- GN Equipped w/Lockable Front Toolbox
- 5 year Dexter Axle Warranty

AVAILABLE OPTIONS

* denotes a standard feature

COUPLER OPTIONS

- BP 2 5/16" Adjustable Rigid Mount (25,000 lb.)
- BP 2 5/16" Adjustable (14,000 lb.)
- 3" Pintle Eye - Channel-mount (20,000 lb.)
- GN 2 5/16" Round (25,000 lb.) w/ Toolbox
- GN 2 5/16" Square (25,000 lb.) w/ Toolbox
- BP 2 5/16" Adj. Cplr w/HD 6 hole Chn Brkt (20k)

AXLE OPTIONS

7,000# (DEXTER)

- (2) Electric (Spring)*
- (2) Elec/Hyd Disc (1,600 PSI Pump) (Spring)

8,000# OIL BATH W/ 14 PLY LR-G TIRES (DEXTER)

- (2) Electric (Spring)

7,000# W/ 14 PLY LR-G TIRES (DEXTER)

- (2) Electric (Spring)

TAIL OPTIONS

- Straight Deck
- Straight Deck w/ 4' Fold-up Gate*
- Straight Deck w/ Bi-Fold Gate
- Straight Deck with Fold Down Gate

OTHER OPTIONS

- Blackwood Pro Full Deck
- Blackwood Pro Outer Deck
- Upgrade to 8 Hole Channel Adjustable Coupler
- 1 Extra Pair Flushmount D-Rings on Steel Floor
- 1 Pair D-Rings
- Add 7-Way RV Plug to Rear Bumper
- Light Bar w/4 Lights

- 1 Pair Flushmount D-Rings on Steel Outer Deck
- Spare Tire and Mount (BP) 215/75/R17.5
- Top Riser Toolbox
- 2nd Jack (Bumper Pull)
- Plate for Winch
- 6" Taller GN Riser
- 9,990 G.V.W.R.
- 12"oc Crossmembers
- Rough Oak Floor
- Receiver Hitch
- 2 3/8" Pipetop Siderails (Removable)
- 11ga(1/4") DP Steel Floor w/ 4 Flushmount D-Rings & 12"oc
- Front Toolbox (Bumper Pull)
- Mount Only for Spare Tire
- Spare Tire and Mount (Bumper Pull)
- Rear Trailer Support Jacks
- Bulldog 2-speed Jacks (12,000 lb.)



DRIVE-OVER FENDERS

Our 1/4" diamond plate steel drive over fenders allow you to drive wide vehicles over the fenders to take full advantage of the deck width.



102" DECK WIDTH

The 102" rail to rail deck width of the Buggy Hauler makes it an excellent choice for hauling 4x4s, rock crawlers, trucks, and other vehicles that exceed the typical 83" deck width.

8" CHANNEL SUPER-WIDE (B8)



Lengths: 20' - 40'



Length	Axles	Est. Base Weight†
24'	2 x 7,000 lbs	4,680 lbs / 2,123 kg

† Weights are estimated for base trailer.
PJ Trailers makes no guarantee regarding the accuracy of estimated weights.

STANDARD FEATURES

- 14,000 lb. G.V.W.R.
- 7,000 lb. x 2 G.A.W.R.
- Adjustable 2 5/16" Ball Bulldog Coupler
- Safety Chains
- 1 - Drop Leg Jack (10,000 lb.)
- 2 - Dexter E-Z Lube Brake Axles (7,000 lb.)
- 6 Leaf Slipper Spring Suspension
- 4 - 16" White Spoke Wheels
- 4 - 235/80R16 Radial Tires (3,520 lb)
- Electric Breakaway Kit w/ Charger
- 5' Channel Ramps w/ Holder
- Dual Bulldog Rear Support Jacks
- 8" Channel Frame & Tongue
- 3" Channel Crossmembers 16" on Center
- 2" Treated Pine Lumber Deck
- DOT Approved Flushmount Lifetime LED Lights
- All-Weather Wiring Harness (7-way RV)
- Sand Blasted, Acid Washed, Powder Coated
- Rubrail w/Stake Pockets
- Tool Tray In Tongue
- 81" Between the Fenders
- GN Option Equipped with 2 Jacks
- GN Equipped w/Lockable Front Toolbox
- 5 year Dexter Axle Warranty

AVAILABLE OPTIONS

* denotes a standard feature

COUPLER OPTIONS

- BP 2 5/16" Adjustable Rigid Mount (25,000 lb.)
- BP 2 5/16" Adjustable (14,000 lb.)
- 3" Pintle Eye - Channel-mount (20,000 lb.)
- GN 2 5/16" Round (25,000 lb.) w/ Toolbox
- GN 2 5/16" Square (25,000 lb.) w/ Toolbox
- BP 2 5/16" Adj. Cplr w/HD 6 hole Chn Brkt (20k)

AXLE OPTIONS

7,000# (DEXTER)

- (2) Electric (Spring)*
- (2) Electric (Torsion)
- (3) Electric (Spring)

8,000# OIL BATH W/14 PLY LR-G TIRES (DEXTER)

- (2) Electric (Spring)

7,000# W/14 PLY LR-G TIRES (DEXTER)

- (3) Electric (Spring)

8,000# OIL BATH AXLES, 235/80 LR-E TIRES (DEXTER)

- (2) Electric (Spring)

TAIL OPTIONS

- Straight deck w/ 5' Slide-in Ramps*
- 4' Dovetail w/ 5' Slide-in Ramps
- 4' Dovetail w/ 5' Rear Slide-in Ramps
- 3.5' Dovetail w/2 Monster Ramps
- 2' Dovetail w/ 5' Slide-in Ramps
- 2' Dovetail w/ 5' Fold-up Ramps
- 2' Dovetail w/ 5' Rear Slide-in Ramps

OTHER OPTIONS

- Add BlackWood Pro to Dovetail
- Blackwood Pro Full Deck
- Blackwood Pro Outer Deck
- Upgrade to 8 Hole Channel Adjustable Coupler
- 1 Extra Pair Flushmount D-Rings on Steel Floor
- 1 Pair D-Rings
- 2 Hydraulic Monster Jacks™
- 2 Extra Side Marker Lights, 1 Per Side
- Spare Tire and Mount (BP) 215/75/R17.5
- Top Riser Toolbox
- 2nd Jack (Bumper Pull)
- Plate for Winch
- 6" Taller GN Riser
- 12"oc Crossmembers
- Rough Oak Floor
- Receiver Hitch
- 11ga(1/8") DP Steel Floor w/4 Flushmount D-Rings & 12"oc
- Front Toolbox (Bumper Pull)
- Mount Only for Spare Tire
- Spare Tire and Mount (Bumper Pull)
- Rear Trailer Support Jacks
- Bulldog 2-speed Jacks (12,000 lb.)



DRIVE-OVER FENDERS

Our 1/4" diamond plate steel drive over fenders allow you to drive wide vehicles over the fenders to take full advantage of the deck width.



102" DECK WIDTH

The 102" rail to rail deck width of the Buggy Hauler makes it an excellent choice for hauling 4x4s, rock crawlers, trucks, and other vehicles that exceed the typical 83" deck width.



ANGLE PIPETOP TRAILER (P8)

Lengths: 16' - 26'



CHANNEL FRAME

Length	Axles	Est. Base Weight†
16'	2 x 7,000 lbs	2,620 lbs / 1,188 kg
18'	2 x 7,000 lbs	2,830 lbs / 1,284 kg
20'	2 x 7,000 lbs	3,050 lbs / 1,383 kg
22'	2 x 7,000 lbs	3,270 lbs / 1,483 kg
24'	2 x 7,000 lbs	3,480 lbs / 1,579 kg

† Weights are estimated for base trailer.

PJ Trailers makes no guarantee regarding the accuracy of estimated weights.

STANDARD FEATURES

- 14,000 lb. G.V.W.R.
- 7,000 lb. x 2 G.A.W.R.
- Adjustable 2 5/16" Ball Bulldog Coupler
- Safety Chains
- 1 - Jack (7,000 lb.)
- 2 - Dexter E- Z Lube Brake Axles (7,000 lb.)
- 6 Leaf Slipper Spring Suspension
- 4 - 16" White Spoke Wheels
- 4 - 235/80R16 Radial Tires (3,520 lb)
- Dual Bulldog Rear Support Jacks
- Electric Breakaway Kit w/ Charger
- 5' Channel Ramps w/ Holder
- 2x3 Angle Upright
- 2 7/8 Pipe Top Rail
- 5" Channel Tongue & 3" x 5" Angle Frame
- 3" Channel Crossmembers 16" on Center
- 2" Treated Pine Lumber Deck
- DOT Approved Flushmount Lifetime LED Lights
- All-Weather Wiring Harness (7-way RV)
- Sand Blasted, Acid Washed, Powder Coated
- GN Option Equipped with 2 Jacks
- GN Equipped w/Lockable Front Toolbox
- 5 year Dexter Axle Warranty

AVAILABLE OPTIONS

* denotes a standard feature

COUPLER OPTIONS

- BP 2 5/16" Adjustable Rigid Mount (25,000 lb.)
- BP 2 5/16" Adjustable (14,000 lb.)*
- 3" Pintle Eye - Channel-mount (20,000 lb.)
- GN 2 5/16" Round (25,000 lb.) w/ Toolbox
- GN 2 5/16" Square (25,000 lb.) w/ Toolbox

AXLE OPTIONS

7,000# (DEXTER)

- (2) Electric (Drop Axle)
- (2) Electric (Spring)*
- (2) Elec/Hyd Disc (1,600 PSI Pump) (Spring)
- (2) Surge Hydraulic Drum [Surge Coupler] (Spring)

7,000# W/14 PLY LR-G TIRES (DEXTER)

- (2) Electric (Spring)

TAIL OPTIONS

- Straight deck w/ 5' Slide-in Ramps*
- Straight deck w/ 5' Fold-up Ramps
- 2' Dovetail w/ Split Heavy Duty Gate
- 2' Dovetail w/ 5' Slide-in Ramps
- 2' Dovetail w/ 5' Fold-up Ramps

OTHER OPTIONS

- Blackwood Pro Full Deck
- Blackwood Pro Outer Deck
- 1 Extra Pair Flushmount D-Rings on Steel Floor
- 1 Pair D-Rings
- Add 7-Way RV Plug to Rear Bumper

- Light Bar w/4 Lights
- Top Riser Toolbox
- 10k Jack (Bumper Pull)
- Plate for Winch
- 6" Taller GN Riser
- Upgrade to 3" X 3
- 12"oc Crossmembers
- Rough Oak Floor
- Receiver Hitch
- 11ga(1/8") DP Steel Floor w/4 Flushmount D-Rings & 12"oc
- Front Toolbox (Bumper Pull)
- Mount Only for Spare Tire
- Spare Tire and Mount
- Rear Trailer Support Jacks



PREMIUM COMPONENTS

Our Angle Pipetop (P8) is equipped with a Bulldog™ Swivel Jack, Bulldog™ Coupler, Dexter EZ-Lube Drop Axles, and Radial Tires at no additional cost.



STRONG, DURABLE SIDES

The sides are welded together on our P8 Pipe-top trailer for maximum durability and strength. Completely welding all the joints on the 2 7/8" pipetop rail, the 3" x 2" angle uprights and 3" x 2" x 3/16" frame creates fixed sides that will hold up over the years.

8" PRO-BEAM™ EQUIPMENT (H4)



Lengths: 20' - 28'



Length	Axles	Est. Base Weight†
20'	2 x 8,000 lbs	3,700 lbs / 1,678 kg
22'	2 x 8,000 lbs	3,982 lbs / 1,806 kg
24'	2 x 8,000 lbs	4,220 lbs / 1,914 kg

† Weights are estimated for base trailer.

PJ Trailers makes no guarantee regarding the accuracy of estimated weights.

I 8" I-BEAM FRAME

STANDARD FEATURES

- 16,000 lb. G.V.W.R.
- 8,000 lb. x 2 G.A.W.R.
- HD 2 5/16" Adjustable 3 Bolt Coupler
- Safety Chains
- 1 - Drop Leg Jack (10,000 lb.)
- 2 - Dexter Oil Bath Brake Axles (8,000 lb.)
- 6 Leaf Slipper Spring Suspension
- 4 - 16" White Spoke Wheels
- 4 - 235/80R16 14 Ply Radial Trs (4,080 lb)
- Rubrail w/Stake Pockets
- Electric Breakaway Kit w/ Charger
- 9" x 72" Treadplate Removable Steel Fenders
- 5' Channel Ramps w/ Holder
- Dual Bulldog Rear Support Jacks
- 8" x 10 lb. I-Beam Main Frame & Tongue
- 3" Channel Crossmembers 16" on Center
- 2" Treated Pine Lumber Deck
- 82" Wide Deck
- DOT Approved Flushmount Lifetime LED Lights
- All-Weather Wiring Harness (7-way RV)
- Sand Blasted, Acid Washed, Powder Coated
- Tool Tray In Tongue
- GN Option Equipped with 2 Jacks
- GN Equipped w/Lockable Front Toolbox
- 5 year Dexter Axle Warranty

AVAILABLE OPTIONS

* denotes a standard feature

COUPLER OPTIONS

- BP 2 5/16" Adj. Cplr w/HD 6 hole Chn Brkt (20k)*
- BP 2 5/16" Adjustable Rigid Mount (25,000 lb.)
- Rigid Mount Pintle Eye- Face-mount
- 3" Pintle Eye - Channel-mount (20,000 lb.)
- GN 2 5/16" Square (25,000 lb.) w/ Toolbox
- GN 2 5/16" Round (25,000 lb.) w/ Toolbox
- 3" Pintle Eye Chan Mnt (20k lb.) w/8 Hole Ch Brckt

AXLE OPTIONS

- 8,000# OIL BATH W/14 PLY LR-G TIRES (DEXTER)**
- (2) Electric (Spring)*
- 8,000# OIL BATH W/215/75R17.5 LR-H SINGLES(DEXTER)**
- (2) Electric (Spring)

TAIL OPTIONS

- Straight Deck w/ 5' Rear Slide-in Ramps*
- 3.5' Dovetail w/2 Monster Ramps
- 2' Dovetail w/ 31x66 HD Fold-up Ramps

OTHER OPTIONS

- Add BlackWood Pro to Dovetail
- Blackwood Pro Full Deck
- Blackwood Pro Outer Deck
- Upgrade to 8 Hole Channel Adjustable Coupler
- Upgrade to Black Spoke Wheels (15-16" Wheels Only)
- 1 Extra Pair Flushmount D-Rings on Steel Floor
- Removable Deck on the Neck (102" Wide 96" Long)
- Add 11ga Diamond Plate to Top of Slide in Ramps

- 1 Pair D-Rings
- 3/8" DP Steel Floor w/4 Flushmount D-Rings & 12"oc
- Add 7-Way RV Plug to Rear Bumper
- Weld on Fenders
- 1/2" DP HD Weld on Fenders Tandem Axle
- 1 Hydraulic Monster Jack™ Includes Front Toolbox
- 2 Hydraulic Monster Jacks™
- Upgrade to (1) - Single BULLDOG 10k Jack
- Upgrade to (2) - Dual BULLDOG 10k Jacks
- Add LED Reverse Lights
- Light Bar w/4 Lights
- No Flooring
- No Pin Striping
- Spare Tire and Mount (BP) 215/75/R17.5
- Spare Tire & Mount (Bumper Pull) G Rated
- Top Riser Toolbox
- Full Size Divided Toolbox Upgrade (BP Only)
- Locking Lid Over Tongue
- Smittybilt Winch 12K w/Plate & Battery
- Smittybilt Winch 17.5K w/HD Plate & Battery
- Smittybilt Winch 9.5K w/Plate & Battery
- 2nd Jack (Bumper Pull)
- Plate for Winch
- Solar Battery Charger
- 6" Taller GN Riser
- 12"oc Crossmembers
- Rough Oak Floor
- Receiver Hitch

- 2 3/8" Pipetop on Siderails (Removable)
- 11ga (3/16") DP Steel Floor w/ 4 D-Rings & 12"oc
- Front Toolbox (Bumper Pull)
- Mount Only for Spare Tire
- Rear Trailer Support Jacks
- Bulldog 2-speed Jacks (12,000 lb.)



8" PRO-BEAM™ FRAME

The H4 equipment trailer features a heavy duty 8" Pro-Beam™ frame for maximum strength backed by the PJ Trailers 3 year frame warranty.





10" PRO-BEAM™ EQUIPMENT (H5)

Lengths: 20' - 32'



I 10" I-BEAM FRAME

Length	Axles	Est. Base Weight†
20'	2 x 10,000 lbs	5,580 lbs / 2,531 kg
22'	2 x 10,000 lbs	5,730 lbs / 2,599 kg
24'	2 x 10,000 lbs	5,910 lbs / 2,681 kg

† Weights are estimated for base trailer.

PJ Trailers makes no guarantee regarding the accuracy of estimated weights.

STANDARD FEATURES

- 20,000 lb. G.V.W.R.
- 10,000 lb. x 2 G.A.W.R.
- 3" Pintle Eye Face Mount Coupler
- Safety Chains
- 1 - Drop Leg Jack (10,000 lb.)
- 2 - Dexter Oil Bath Axles (10,000 lb.)
- Torsion Suspension
- 4 - 17.5" Grey Wheels
- 235/75/R17.5 LR-J 8-hole SINGLE
- Rubrail w/ Stake Pockets
- Electric Breakaway Kit w/ Charger
- 9" x 81" Treadplate Removable Steel Fenders
- 5' Channel Ramps w/ Holder
- Dual Bulldog Rear Support Jacks
- 10" x 19 lb. I-Beam Main Frame & Tongue
- 3" Channel Crossmembers 16" on Center
- 2" Treated Pine Lumber Deck
- 82" Wide Deck
- DOT Approved Flushmount Lifetime LED Lights
- All-Weather Wiring Harness (7-way RV)
- Sand Blasted, Acid Washed, Powder Coated
- Tool Tray In Tongue
- GN Option Equipped with 2 Jacks
- GN Equipped w/Lockable Front Toolbox
- 5 year Dexter Axle Warranty

AVAILABLE OPTIONS

* denotes a standard feature

COUPLER OPTIONS

- BP 2 3/8" Adj Rigid Mount (25,000 lb.)
- 3" Pintle Eye - Face-mount (36,000 lb.)*
- GN 2 3/8" Round (25,000 lb.) w/ Toolbox
- GN 2 3/8" Square (25,000 lb.) w/ Toolbox

AXLE OPTIONS

10,000# W/235/75R17.5" LR-J SINGLE T&W (DEXTER)
(2) Electric (Torsion)*

TAIL OPTIONS

- Straight Deck w/ 5' Rear Slide-in Ramps*
- 3.5' Dovetail w/2 Monster Ramps
- 2' Dovetail w/ 31x66 HD Fold-up Ramps

OTHER OPTIONS

- Add BlackWood Pro to Dovetail
- Blackwood Pro Full Deck
- Blackwood Pro Outer Deck
- Upgrade to Black Spoke Wheels (15-16" Wheels Only)
- 1 Extra Pair Flushmount D-Rings on Steel Floor
- Removable Deck on the Neck (102" Wide 96" Long)
- Add 11ga Diamond Plate to Top of Slide in Ramps
- 1 Pair D-Rings
- 3/8" DP Steel Floor w/4 Flushmount D-Rings & 12"oc
- Add 7-Way RV Plug to Rear Bumper
- Weld on Fenders
- 3/4" DP HD Weld on Fenders Tandem Axle
- HD 25k Jost 2x Jacks
- 1 Hydraulic Monster Jack™ Includes Front Toolbox
- 2 Hydraulic Monster Jacks™
- Upgrade to (1) - Single BULLDOG 10k Jack

- Upgrade to (2) - Dual BULLDOG 10k Jacks
- Upgrade to BULLDOG 10k Jacks (Gooseneck Only)
- Add LED Reverse Lights
- Light Bar w/4 Lights
- No Flooring
- No Pin Striping
- No Ramps No Ramp Pockets
- 4 Side Marker 3/4" Bullet Lights, 2 Per Side
- Top Riser Toolbox
- Full Size Divided Toolbox Upgrade (BP Only)
- Smittybilt Winch 12K w/Plate & Battery
- Smittybilt Winch 17.5K w/HD Plate & Battery
- Smittybilt Winch 9.5k w/Plate & Battery
- HD GN Winch Plate (Rec. for 18k Winches)
- 2nd Jack (Bumper Pull)
- Plate for Winch
- Solar Battery Charger
- 6" Taller GN Riser
- 12"oc Crossmembers
- Rough Oak Floor
- Receiver Hitch
- 2 3/8" Pipetop on Siderails (Removable)
- 11ga(3/8") DP Steel Floor w/4 Flushmount D-Rings & 12"oc
- Front Toolbox (Bumper Pull)
- Rear Trailer Support Jacks
- Bulldog 2-speed Jacks (12,000 lb.)



10" PRO-BEAM™ FRAME

The H5 equipment trailer features a heavy duty 10" Pro-Beam™ frame for maximum strength backed the PJ Trailers 3 year frame warranty.



PREMIUM COMPONENTS

Our 10" Pro-Beam™ Equipment is equipped with a Pro-Series 10K Spring Loaded Drop-leg Jack, Rigid Coupler, Dexter Torflex Axles, and 16 Ply Radial Tires at no additional cost.

8" PRO-BEAM™ SUPER-WIDE EQUIP (H6)



Lengths: 20' - 30'



I 8" I-BEAM FRAME

Length	Axles	Est. Base Weight†
20'	2 x 8,000 lbs	3,970 lbs / 1,801 kg
22'	2 x 8,000 lbs	4,210 lbs / 1,910 kg
24'	2 x 8,000 lbs	4,530 lbs / 2,055 kg

† Weights are estimated for base trailer.

PJ Trailers makes no guarantee regarding the accuracy of estimated weights.

STANDARD FEATURES

- 16,000 lb. G.V.W.R.
- 8,000 lb. x 2 G.A.W.R.
- HD 2 5/16" Adjustable 3 Bolt Coupler
- Safety Chains
- 1 - Drop Leg Jack (10,000 lb.)
- 2 - Dexter Oil Bath Brake Axles (8,000 lb.)
- 6 Leaf Slipper Spring Suspension
- 4 - 16" White Spoke Wheels
- 4 - 235/80R16 14 Ply Radial Trs (4,080 lb)
- Rubrail w/Stake Pockets
- Electric Breakaway Kit w/ Charger
- HD Drive Over 1/4" Diamond Plate Fenders
- 5' Channel Ramps w/ Holder
- 8" x 10 lb. I-Beam Main Frame & Tongue
- 3" Channel Crossmembers 16" on Center
- 2" Treated Pine Lumber Deck
- 102" Wide Deck
- DOT Approved Flushmount Lifetime LED Lights
- All-Weather Wiring Harness (7-way RV)
- Sand Blasted, Acid Washed, Powder Coated
- Tool Tray In Tongue
- GN Option Equipped with 2 Jacks
- GN Equipped w/Lockable Front Toolbox
- 5 year Dexter Axle Warranty

AVAILABLE OPTIONS

* denotes a standard feature

COUPLER OPTIONS

- BP 2 5/8" Adj. Cplr w/HD 6 hole Chn Brkt (20k)*
- Rigid Mount Pintle Eye- Face-mount (25,000)
- BP 2 5/8" Adjustable Rigid Mount (25,000 lb.)
- 3" Pintle Eye - Channel-mount (20,000 lb.)
- GN 2 5/8" Square (25,000 lb.) w/ Toolbox
- 3" Pintle Eye Chan Mnt (20k lb.) w/8 Hole Ch Brckt

AXLE OPTIONS

- 8,000# OIL BATH W/14 PLY LR-G TIRES (DEXTER)**
- (2) Electric (Spring)*
- 8,000# OIL BATH W/215/75R17.5 LR-H SINGLES(DEXTER)**
- (2) Electric (Spring)

TAIL OPTIONS

- Straight Deck w/ 5' Rear Slide-in Ramps*
- 3.5' Dovetail w/2 Monster Ramps
- 2' Dovetail w/ 31x66 HD Fold-up Ramps

OTHER OPTIONS

- Add BlackWood Pro to Dovetail
- Blackwood Pro Full Deck
- Blackwood Pro Outer Deck
- Upgrade to 8 Hole Channel Adjustable Coupler
- Upgrade to Black Spoke Wheels (15-16" Wheels Only)
- 1 Extra Pair Flushmount D-Rings on Steel Floor
- Removable Deck on the Neck (102" Wide 96" Long)
- Add 11ga Diamond Plate to Top of Slide in Ramps
- 1 Pair D-Rings
- 5/8" DP Steel Floor w/4 Flushmount D-Rings & 12"oc
- Add 7-Way RV Plug to Rear Bumper
- Weld on Fenders

- 1/4" DP HD Weld on Fenders Tandem Axle
- 1 Hydraulic Monster Jack™ Includes Front Toolbox
- 2 Hydraulic Monster Jacks™
- Upgrade to (1) - Single BULLDOG 10K Jack
- Upgrade to (2) - Dual BULLDOG 10K Jacks
- Add LED Reverse Lights
- No Flooring
- No Pin Striping
- Spare Tire and Mount (BP) 215/75/R17.5
- Spare Tire & Mount (Bumper Pull) G Rated
- Top Riser Toolbox
- Full Size Divided Toolbox Upgrade (BP Only)
- Smittybilt Winch 12K w/Plate & Battery
- Smittybilt Winch 17.5K w/HD Plate & Battery
- Smittybilt Winch 9.5k w/Plate & Battery
- 2nd Jack (Bumper Pull)
- Plate for Winch
- Solar Battery Charger
- 6" Taller GN Riser
- 12"oc Crossmembers
- Rough Oak Floor
- Receiver Hitch
- 11ga (5/8") DP Steel Floor w/ 4 D-Rings & 12"oc
- Front Toolbox (Bumper Pull)
- Mount Only for Spare Tire
- Rear Trailer Support Jacks
- Bulldog 2-speed Jacks (12,000 lb.)



8" PRO-BEAM™ FRAME

The H6 equipment trailer features a heavy duty 8" Pro-Beam™ frame for maximum strength backed by the PJ Trailers 3 year frame warranty.



PREMIUM COMPONENTS

Our 8" Pro-Beam™ Equipment is equipped with a Pro-Series 10K Spring Loaded Drop-leg Jack, Rigid Coupler, Dexter Torflex Axles, and 16 Ply Radial Tires at no additional cost.



10" PRO-BEAM™ SUPER-WIDE EQUIP (H7)

Lengths: 20' - 32'



I 10" I-BEAM FRAME

Length	Axles	Est. Base Weight†
20'	2 x 10,000 lbs	5,680 lbs / 2,576 kg
22'	2 x 10,000 lbs	5,820 lbs / 2,640 kg
24'	2 x 10,000 lbs	6,010 lbs / 2,726 kg

† Weights are estimated for base trailer.
PJ Trailers makes no guarantee regarding the accuracy of estimated weights.

STANDARD FEATURES

- 20,000 lb. G.V.W.R.
- 10,000 lb. x 2 G.A.W.R.
- 3" Pintle Eye Face Mount Coupler
- Safety Chains
- 1 - Drop Leg Jack (10,000 lb.)
- 2 - Dexter Oil Bath Axles (10,000 lb.)
- Torsion Suspension
- 4 - 17.5" Grey Wheels
- 235/75/R17.5 LR-J 8-hole SINGLE
- Rubrail w/ Stake Pockets
- Electric Breakaway Kit w/ Charger
- HD Drive Over 1/4" Diamond Plate Fenders
- 5' Channel Ramps w/ Holder
- Dual Bulldog Rear Support Jacks
- 10" x 19 lb. I-Beam Main Frame & Tongue
- 3" Channel Crossmembers 16" on Center
- 2" Treated Pine Lumber Deck
- 102" Wide Deck
- DOT Approved Flushmount Lifetime LED Lights
- All-Weather Wiring Harness (7-way RV)
- Sand Blasted, Acid Washed, Powder Coated
- Tool Tray In Tongue
- GN Option Equipped with 2 Jacks
- GN Equipped w/Lockable Front Toolbox
- 5 year Dexter Axle Warranty

AVAILABLE OPTIONS

* denotes a standard feature

COUPLER OPTIONS

- 3" Pintle Eye - Face-mount (36,000 lb.)*
- BP 2 5/16" Adj Rigid Mount (25,000 lb.)
- GN 2 5/16" Round (25,000 lb.) w/ Toolbox
- GN 2 5/16" Square (25,000 lb.) w/ Toolbox

AXLE OPTIONS

- 10,000# W/235/75R17.5" LR-J SINGLE T&W (DEXTER)
- (2) Electric (Torsion)*

TAIL OPTIONS

- Straight Deck w/ 5' Rear Slide-in Ramps
- 3.5' Dovetail w/2 Monster Ramps
- 2' Dovetail w/ 31x66 HD Fold-up Ramps

OTHER OPTIONS

- Upgrade to BULLDOG 10k Jacks (Gooseneck Only)
- Add LED Reverse Lights
- Light Bar w/4 Lights
- No Flooring
- No Pin Striping
- No Ramps No Ramp Pockets
- 4 Side Marker 3/4" Bullet Lights, 2 Per Side
- Top Riser Toolbox
- Full Size Divided Toolbox Upgrade (BP Only)
- Smittybilt Winch 12K w/Plate & Battery

- Smittybilt Winch 17.5K w/HD Plate & Battery
- Smittybilt Winch 9.5k w/Plate & Battery
- HD GN Winch Plate (Rec. for 18k Winches)
- 2nd Jack (Bumper Pull)
- Plate for Winch
- Solar Battery Charger
- 6" Taller GN Riser
- 12"oc Crossmembers
- Rough Oak Floor
- Receiver Hitch
- 11ga(1/8") DP Steel Floor w/4 Flushmount D-Rings & 12"oc
- Front Toolbox (Bumper Pull)
- Rear Trailer Support Jacks
- Bulldog 2-speed Jacks (12,000 lb.)



10" PRO-BEAM™ FRAME

The H7 equipment trailer features a heavy duty 10" Pro-Beam™ frame for maximum strength backed the PJ Trailers 3 year frame warranty.



PREMIUM COMPONENTS

Our 10" Pro-Beam™ Equipment is equipped with a Pro-Series 10K Spring Loaded Drop-leg Jack, Rigid Coupler, Dexter Torflex Axles, and 16 Ply Radial Tires at no additional cost.



WHAT IS BLACKWOOD?

Blackwood is a wooden lumber product with rubber infused to the top of each board. Blackwood Max-Trac has a treaded rubber insert that covers approximately 75% of the board surface. Blackwood Pro has rubber layer that covers the entire top surface of each board. Blackwood solves several age old trailer lumber problems.

TRACTION

Blackwood considerably improves traction over typical lumber. With the tactile surface of Blackwood your cargo is less likely to slide and shift while towing your trailer

DURABILITY

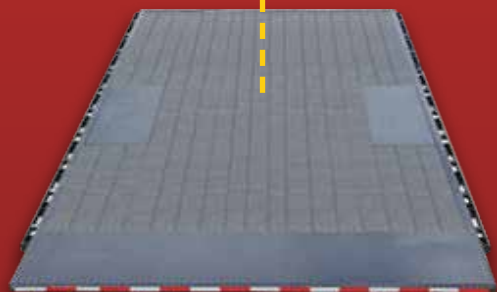
Blackwood's industrial grade, UV resistant rubber helps absorb heavy impacts that might crack or damage typical lumber, while also preventing stains and discoloration. It can be easily cleaned with water. This ultra-durable material can handle twisting and torque of equipment like skid steers without issue.

LUMBER QUALITY

Blackwood is made with Weyerhaeuser Treater Series Lumber. Treater series lumber goes through strict computerized grading that greatly minimizes warping.

SAFETY & COMFORT

Blackwood increases your traction when walking on the trailer deck to prevent slipping & falling, improving your personal safety.



All wood decking is not created equal! When you invest in a trailer with LOKT Lumber, you are getting a premium wood deck that has been carefully dried, treated and sorted to pass strict guidelines that will increase the life of your deck.



Introducing MAX-TRAC, our latest revolutionary deck option that delivers maximum loading traction. With MAX-TRAC you can easily load your equipment or vehicle in extreme environments, both quickly and more importantly, safely.

CAR HAULER & EQUIPMENT OPTIONS GUIDE

POWDER COAT COLOR OPTIONS:

ACTUAL COLOR MAY VARY, CHECK SPECIFIC MODEL PAGE FOR AVAILABLE COLORS



BLACK



GREY



DESERT TAN



WHITE



RED



TRACTOR ORANGE

TAIL OPTIONS:



STRAIGHT DECK
W/ 5' SLIDE-IN RAMPS



2' DOVETAIL
W/ 5' SLIDE-IN RAMPS



STRAIGHT DECK
W/ 5' FOLD-UP RAMPS



**MONSTER
RAMPS**



HEAVY DUTY
SPLIT GATE

OTHER OPTIONS:



RECEIVER HITCH



RUBRAIL



WINCH 12VDC (12,000 LB.)



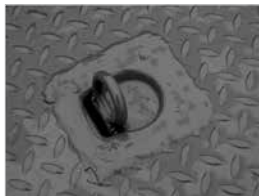
DECK ON THE NECK
(GOOSENECK ONLY)



PAIR D-RINGS



ROUGH OAK FLOOR



STEEL FLOOR & 4 D-RINGS



SPARE TIRE MOUNT



DIAMOND PLATE RUNNING
BOARDS



2-3/8" PIPETOP REMOVE-
ABLE SIDERAILS (CC, C8)



HEAVY DUTY
STAND-UP RAMPS



PROMAXX
AIR SUSPENSION

SOME OPTIONS NOT SHOWN,
PLEASE VIEW PRODUCT PAGE
FOR A LIST OF ALL OPTIONS



PJ TRAILERS

- #1 Professional Grade Open Trailer Manufacturer
- Broad Line of Dumps, Flatdecks, Utilities, Carhaulers, Tilts & Equipment Trailers
- Over 300 Independent PJ Trailers Dealer Locations in the US & Canada

Visit Us Online at www.pjtrailers.com

